

Pressure WASHING

PROFESSIONAL GRADE FEATURES



HEAVY DUTY SOLID SPUN DISCS WITH ROLLED EDGES - not stamped, made with first of its kind CNC robotic spinning cell

LOW PROFILE RISER & OPEN DRUM SLOT for smooth, even hose wraps

ZINC PLATED PLUMBING for applications requiring superior oxidation prevention
Only on 1/2" 1125 Series

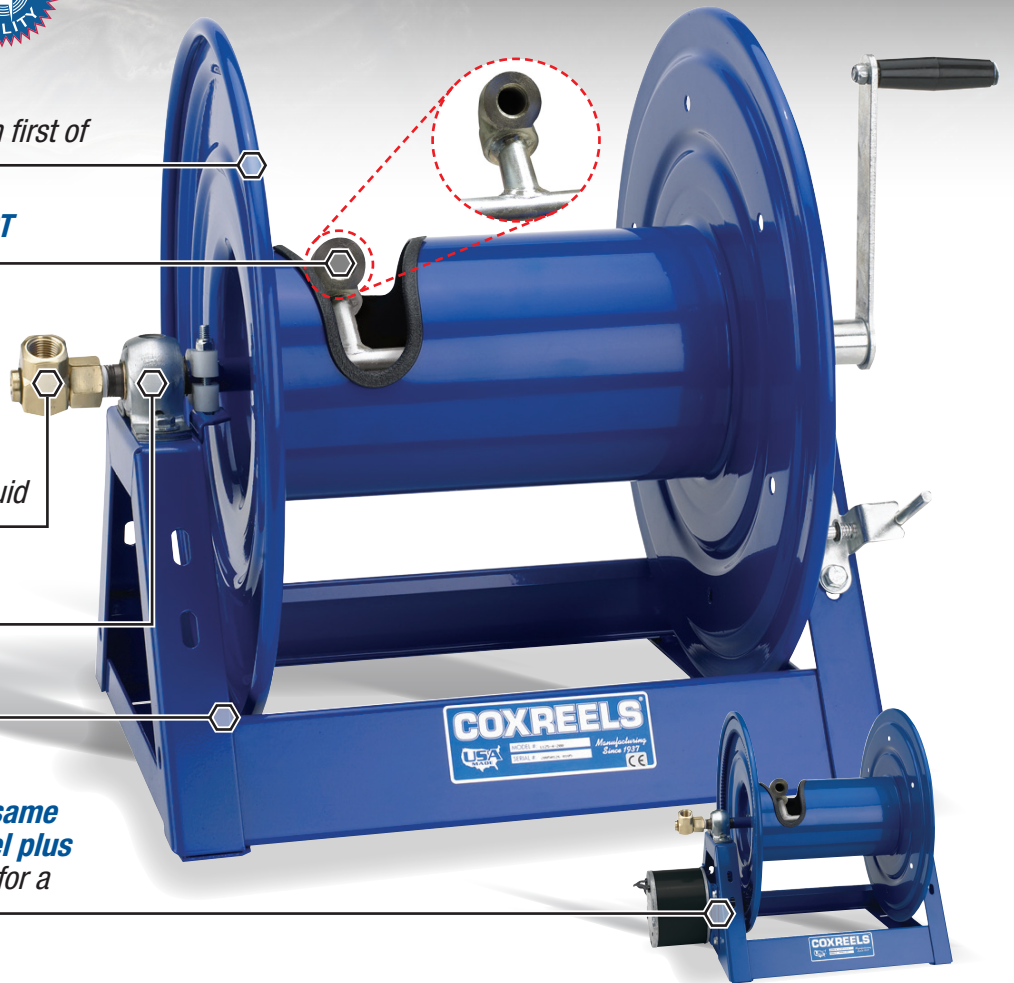
INDUSTRIAL GRADE BRASS, machined from solid, full flow swivel with external fluid path for ease of seal maintenance

PERMANENTLY SEALED PILLOW BLOCK BEARINGS for smooth rotation

ONE PIECE ALL CNC ROBOTICALLY WELDED steel "A" frame construction

MOTORIZED VERSIONS:

The electric version features all of the same features found on the hand crank model plus **SOLID STEEL HALO** is welded to the disc for a direct gear driven motor



POSSIBLE FIELDS OF APPLICATION

- Pressure Washing
- Ground Maintenance
- Industrial Cleaning
- High Pressure Spraying
- Power Wash
- Water Jetting
- Water Blasting
- Steam Cleaning

www.coxreels.com

800.COX.REEL

P: 480.820.6396

F: 480.820.5132

E: info@coxreels.com



Pressure Washing



1125 SERIES



- External fluid path with machined from solid brass 90° full-flow NPT swivel inlet (Nickel plated steel swivel on 1" models)
- Swivel Seals: NITRILE
- Exclusive low profile outlet riser (Zinc plated on 1/2" models) & open drum slot design for flat smooth hose wrap
- All welded steel "A" frame construction for superior reel structure

MODEL	MOTOR OPTION	I.D.	FT.	PSI	APRX. LBS.	W x H x L
1125-4-100	Electric Motor Options Available	1/2"	100	3,000	36	19 1/2 x 18 3/4 x 17 5/8"
1125-4-200		1/2"	200	3,000	39	25 1/2 x 18 3/4 x 17 5/8"
1125-4-325		1/2"	325	3,000	48	31 1/2 x 18 3/4 x 17 5/8"
1125-4-500		1/2"	500	3,000	58	41 1/2 x 18 3/4 x 17 5/8"
1125-5-100		3/4"	100	3,000	42	26 3/4 x 18 3/4 x 17 5/8"
1125-5-175		3/4"	175	3,000	50	32 3/4 x 18 3/4 x 17 5/8"
1125-5-200		3/4"	200	3,000	55	38 3/4 x 18 3/4 x 17 5/8"
1125-5-250		3/4"	250	3,000	59	42 3/4 x 18 3/4 x 17 5/8"

HP 1125 SERIES



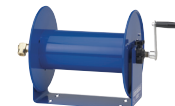
- External fluid path with electroless nickel plated steel 90° full-flow NPT swivel inlet
- Swivel Seals: AFLAS
- Exclusive low profile outlet riser (Zinc plated on 1/2" models) & open drum slot design for flat smooth hose wrap
- All welded steel "A" frame construction for superior reel structure

MODEL	MOTOR OPTION	I.D.	FT.	HP PSI	APRX. LBS.	W x H x L
HP1125-4-100	Electric Motor Options Available	1/2"	100	5,000	36	19 1/2 x 18 3/4 x 17 5/8"
HP1125-4-200		1/2"	200	5,000	39	25 1/2 x 18 3/4 x 17 5/8"
HP1125-4-325		1/2"	325	5,000	48	31 1/2 x 18 3/4 x 17 5/8"
HP1125-4-500		1/2"	500	5,000	58	41 1/2 x 18 3/4 x 17 5/8"
HP1125-5-100		3/4"	100	5,000	42	26 3/4 x 18 3/4 x 17 5/8"
HP1125-5-175		3/4"	175	5,000	50	32 3/4 x 18 3/4 x 17 5/8"
HP1125-5-200		3/4"	200	5,000	55	38 3/4 x 18 3/4 x 17 5/8"
HP1125-5-250		3/4"	250	5,000	59	42 3/4 x 18 3/4 x 17 5/8"

CHOICE OF MOTORS



100 SERIES



- External fluid path with machined from solid brass 90° full-flow NPT swivel inlet
- Swivel Seals: NITRILE
- Solid one piece, heavy gauge steel "U" shaped frame
- Open drum design for no hassle hose wrap

MODEL	I.D.	FT.	PSI	APRX. LBS.	W x H x L
112-3-50	3/8"	50	4,000	15	14 1/2 x 13 x 12"
112-3-100	3/8"	100	4,000	19	18 1/4 x 13 x 12"
112-3-150	3/8"	150	4,000	21	22 3/4 x 13 x 12"
117-3-250	3/8"	250	4,000	30	18 1/4 x 18 x 17"
117-3-400	3/8"	400	4,000	33	22 3/4 x 18 x 17"
112-4-75	1/2"	75	4,000	21	22 3/4 x 13 x 12"
117-4-225	1/2"	225	4,000	31	22 3/4 x 18 x 17"
117-4-350	1/2"	350	4,000	37	28 1/4 x 18 x 17"

CM & DM SERIES



- External fluid path with machined from solid brass 90° full-flow NPT swivel inlet
- Swivel Seals: NITRILE
- CM: Caddy Mount Hand Crank Hose Reel
- DM: Dolly Mount Hand Crank Hose Reel

MODEL	I.D.	FT.	PSI	APRX. LBS.	W x H x L
112-3-100-CM	3/8"	100	4,000	18	18 1/2 x 14 3/4 x 13 1/8"
112-3-150-CM	3/8"	150	4,000	22	23 x 14 3/4 x 13 1/8"
117-4-225-CM	1/2"	225	4,000	28	23 x 18 1/2 x 18"
117-3-200-DM	3/8"	200	4,000	37	19 x 36 1/4 x 21"
117-4-225-DM	1/2"	225	4,000	39	23 1/2 x 36 1/4 x 21"

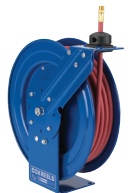
SM SERIES AND OPTIONAL MOUNTING BRACKET



- External fluid path with machined from solid brass 90° full-flow NPT swivel inlet
- Swivel Seals: VITON®
- Forward-weighted design ensures rotation in direction of use

MODEL	I.D.	FT.	PSI	APRX. LBS.	W x H x L	
SM12-3-100	3/8"	100	4,000	15	19 x 13 1/2 x 12"	
SM17-3-250	3/8"	250	4,000	26	19 x 18 1/2 x 17"	
SM17-4-125	1/2"	125	4,000	26	19 x 18 1/2 x 17"	
SMK-02	SM Series Mounting Bracket				8	-

P SERIES



- External fluid path with Zinc plated steel full-flow NPT swivel inlet
- Swivel Seals: NITRILE
- Sturdy single pedestal spring driven reel with space saving design facilitates workplace organization

MODEL	EZ-Coil® Safety Line	I.D.	FT.	PSI	APRX. LBS.	W x H x L
P-HP-125	EZ-P-HP-125	1/4"	25	5,000	48	7 x 18 5/8 x 17 1/8"
P-HP-325	EZ-P-HP-325	1/4"	50	4,000	49	7 x 18 5/8 x 17 1/8"

HP SERIES - EQUIPPED WITH SUPER HUB™



- External fluid path with Zinc plated steel full-flow NPT swivel inlet
- Swivel Seals: NITRILE
- Sturdy single pedestal spring driven reel features Coxreels' exclusive Super Hub™ dual axle support system

MODEL	EZ-Coil® Safety Line	I.D.	FT.	PSI	APRX. LBS.	W x H x L
HP-N-150	EZ-HP-150	1/4"	50	5,000	64	8 3/4 x 25 1/2 x 19 1/2"
HP-N-350	EZ-HP-350	3/8"	50	4,000	65	9 1/4 x 25 1/2 x 19 1/2"

T SERIES - EQUIPPED WITH SUPER HUB™



- External fluid path with Zinc plated steel full-flow NPT swivel inlet
- Swivel Seals: NITRILE
- Sturdy dual pedestal reel features Coxreels' exclusive Super Hub™ dual axle support system

MODEL	EZ-Coil® Safety Line	I.D.	FT.	PSI	APRX. LBS.	W x H x L
THP-N-150	EZ-THP150	1/4"	50	5,000	74	9 3/8 x 21 1/4 x 19 1/2"
THP-N-1100	EZ-THP-1100	1/4"	100	5,000	104	9 3/8 x 25 1/2 x 24"
THP-N-350	EZ-THP-350	3/8"	50	4,000	78	9 3/8 x 21 1/4 x 19 1/2"
THP-N-375	EZ-THP-375	3/8"	75	4,000	98	9 3/8 x 25 1/2 x 24"

This selection only represents a sample of products applicable in this industry. Please visit us online or consult the factory for more product options.